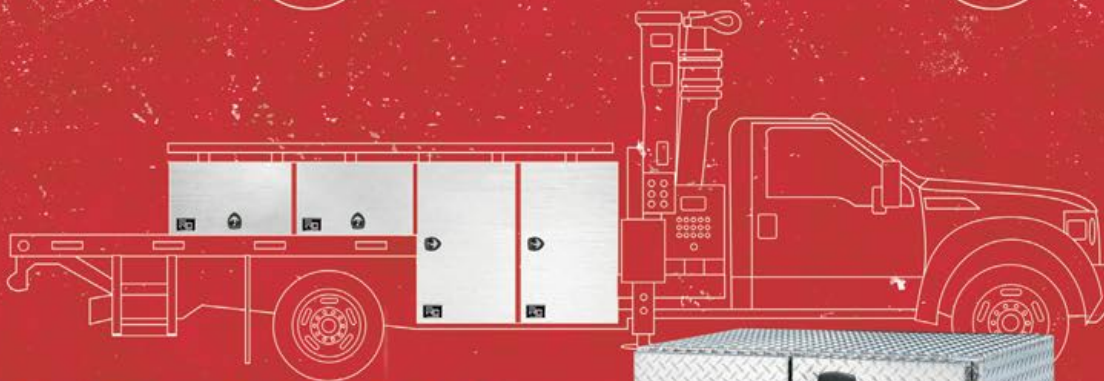
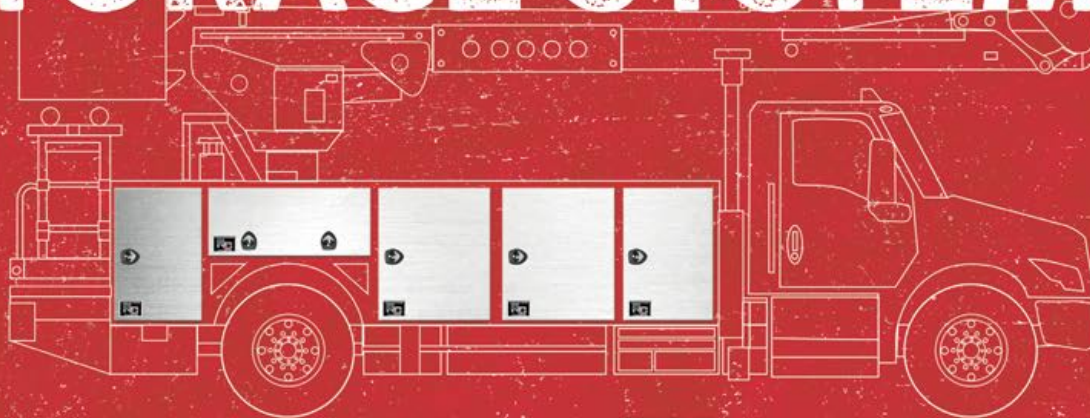




AMERICA'S FAVORITE STYLISH AND DURABLE

STORAGE SYSTEMS



WORK TRUCKS AND TRAILERS



FULL-LINE BROCHURE



“We have assembled a team of experienced professionals with a shared passion for metal fabrication. Combining this passion with our relentless focus on customer satisfaction is what separates RC Industries from the rest.” - Chris Curtis, Owner.

HOW IT'S MADE

ABOUT US: RC Industries strives to produce your parts right the first time. Utilizing continuous improvement methods, high-quality materials, and the best fabrication tools money can buy, RC constantly refines its toolboxes and other products to provide the best result at the most economical rates.

SUPPORT: The support team at RC Industries is passionate about taking care of their customers. You're more than a number, you'll be more like family. At RC, our "Made In America" products will work to your benefit. From design to after-sale service, RC will be there for you.





THE RC WAY

ON-TIME DELIVERY: What good are the best tool-boxes in the industry if they're not built right and delivered on-time? RC Industries strives to deliver your order faster than the market average. RC's 94% on-time delivery record speaks to this success—getting you what you want when you need it!

ADVANCED CUSTOM WORK: At the core of RC Industries is a dedicated, capable, custom metal fabrication shop. Why compromise? Work with RC's customer service reps and engineers to design an American-made product that meets your exact, custom or off-the-shelf needs.



M

SERIES

Weatherproof, tried and true toolbox
 Double or single drop-down doors
 Available in steel, smooth aluminum, diamond bright aluminum and stainless steel



FEATURES

- ❖ Pan-formed doors with integrated gutter
- ❖ Heavy-duty door retainer chains
- ❖ Stainless steel "L" style hinge
- ❖ Automotive-style bulb seal
- ❖ Powder coat — textured black (standard)
- ❖ Gloss black and white available



WIDTH RANGE

18-96 inches

HEIGHT RANGE

10-28 inches

DEPTH RANGE

12-48 inches

OPTIONS

- ❖ Welded in shelves
- ❖ Adjustable shelves
- ❖ No cross break in door

EM

SERIES

Flush mounted door
 Double or single drop-down doors
 Available in steel, smooth aluminum, stainless steel and smooth aluminum box with diamond bright aluminum door



FEATURES

- ❖ Anchor compression latch with lock cylinder
- ❖ Heavy-duty door retainer chains
- ❖ Stainless steel "L" style hinge
- ❖ Flat seal
- ❖ Powder coat — textured black (standard)
- ❖ Gloss black and white available



WIDTH RANGE

18-96 inches

HEIGHT RANGE

10-30 inches

DEPTH RANGE

12-48 inches

OPTIONS

- ❖ Welded in shelves
- ❖ Adjustable shelves



EVERY SERIES IS PROUDLY DESIGNED AND

F

SERIES

Double swing out doors with no center post
 Double anchor latches
 Available in steel, smooth aluminum, stainless steel and diamond bright aluminum



FEATURES

- ❖ Gas props
- ❖ Stainless steel "L" style hinge
- ❖ Automotive style bulb seal
- ❖ Powder Coat — textured black (standard)
- ❖ Gloss black and white available



WIDTH RANGE

36-96 inches

HEIGHT RANGE

14-30 inches

DEPTH RANGE

12-48 inches

OPTIONS

- ❖ Roadside/curbside mounting
- ❖ Shelves

C

SERIES

Double swing out doors with no center post
 Single anchor handle with locking rods
 Available in steel, smooth aluminum, stainless steel and diamond bright aluminum



FEATURES

- ❖ Gas props
- ❖ Stainless steel "L" style hinge
- ❖ Automotive style bulb seal
- ❖ Powder coat — textured black (standard)
- ❖ Gloss black and white available



WIDTH RANGE

36-96 inches

HEIGHT RANGE

24-72 inches

DEPTH RANGE

12-48 inches

OPTIONS

- ❖ Roadside/curbside mounting
- ❖ Shelves

C SERIES

Single or double lift-up lid (chest style)
 Open flat back
 Available in steel, smooth aluminum, stainless steel and diamond bright aluminum



FEATURES



- ❖ Stainless steel paddle/rotary latches with cylinder lock
- ❖ Stainless steel "L" style hinge
- ❖ Heavy-duty gas props
- ❖ Neoprene flat weather seal
- ❖ Locking rods connecting double handles
- ❖ Powder coat — textured black (standard)
- ❖ Gloss black and white available

WIDTH RANGE
12-132 inches

HEIGHT RANGE
07-36 inches

DEPTH RANGE
12-36 inches

OPTIONS

- ❖ Vertical dividers welded in box
- ❖ Channels on bottom
- ❖ Tray in box

P SERIES

Single or double swing up doors
 Top hinging
 Available in steel, smooth aluminum, stainless steel and diamond bright aluminum



FEATURES



- ❖ Anchor compression latch with cylinder lock
- ❖ Two gas props per door
- ❖ Stainless steel "L" style hinge
- ❖ Automotive style bulb seal
- ❖ Powder coat — textured black (standard)
- ❖ Gloss black and white available

WIDTH RANGE
16-96 inches

HEIGHT RANGE
14-36 inches

DEPTH RANGE
12-48 inches

OPTIONS

- ❖ Welded in or adjustable shelf
- ❖ Tray on top of box

MADE IN THE UNITED STATES OF AMERICA



CAM SERIES

Double swing out doors with no center post
 Secure padlockable cam latch
 Available in smooth aluminum and stainless steel



FEATURES



- ❖ Stainless steel "L" hinges
- ❖ Automotive style bulb seal
- ❖ Gas spring door props
- ❖ Powder coat — textured black (standard)
- ❖ Gloss black and white available

WIDTH RANGE
24-96 inches

HEIGHT RANGE
14-24 inches

DEPTH RANGE
12-24 inches

OPTIONS

- ❖ Welded in shelves
- ❖ Adjustable shelves

V SERIES

Single side swing door
 Side hinging - roadside or curbside
 Available in steel, smooth aluminum and stainless steel

FEATURES

- ❖ Anchor compression latch with cylinder lock
- ❖ Stainless steel "L" style hinge
- ❖ Automotive style bulb seal
- ❖ Gas prop
- ❖ Powder coat — textured black (standard)
- ❖ Gloss black and white available



WIDTH RANGE
16-40 inches

HEIGHT RANGE
14-72 inches

DEPTH RANGE
12-48 inches

OPTIONS

- ❖ Welded in or adjustable shelf
- ❖ Vertical dividers

R

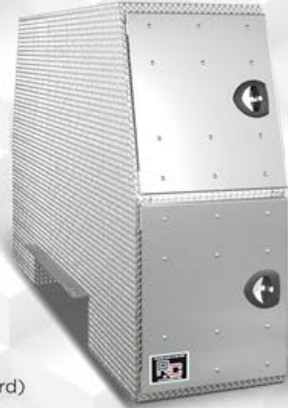
SERIES

Notched bottom contoured storage pack with adjustable shelf

Available in steel, smooth aluminum, diamond bright aluminum and stainless steel

FEATURES

- ❖ Two (stacked) side swing doors on both ends
- ❖ Anchor compression latches with cylinder locks
- ❖ Gas props
- ❖ Stainless steel "L" style hinges
- ❖ Automotive style bulb seal
- ❖ Notched bottom of box
- ❖ One adjustable shelf with access from either side
- ❖ Two swivel rope hooks
- ❖ Integrated mounting angles
- ❖ Reinforced floor
- ❖ Powder coat — textured black (standard)
- ❖ Gloss black and white available



WIDTH RANGE

70-102 inches

HEIGHT RANGE

24-63 inches

DEPTH RANGE

16-48 inches

OPTIONS

- ❖ 1 directional 42" slide out drawers
- ❖ Extra shelves

L

SERIES

Flat bottom contoured storage pack with adjustable shelf

Available in steel, smooth aluminum, diamond bright aluminum and stainless steel

FEATURES

- ❖ Two stacked side swing doors on both ends
- ❖ Anchor compression latches with lock cylinders
- ❖ Gas props
- ❖ Stainless steel "L" style hinges
- ❖ Automotive style bulb seal
- ❖ Flat bottom of box
- ❖ One adjustable shelf with access from either side
- ❖ Two swivel rope hooks
- ❖ Integrated mounting angles
- ❖ Reinforced floor
- ❖ Powder coat— textured black (standard)
- ❖ Gloss black and white available



WIDTH RANGE

70-102 inches

HEIGHT RANGE

24-63 inches

DEPTH RANGE

16-48 inches

OPTIONS

- ❖ 1 directional 42" slide out drawers
- ❖ Extra shelves



EVERY SERIES IS PROUDLY DESIGNED AND

J

SERIES

Flat faced storage pack

Available in steel, smooth aluminum, diamond bright aluminum and stainless steel

FEATURES

- ❖ Single side swing door on each ends of box (side hinging)
- ❖ Anchor compression
- ❖ Latches with cylinder lock
- ❖ Locking rods on boxes 48" and taller standard
- ❖ Gas props
- ❖ Stainless steel "L" style hinges
- ❖ Automotive style bulb seal
- ❖ Powder coat — textured black (standard)
- ❖ Gloss black and white available



WIDTH RANGE

70-102 inches

HEIGHT RANGE

24-63 inches

DEPTH RANGE

16-43 inches

OPTIONS

- ❖ Adjustable/welded in shelf
- ❖ Integrated mounting angles
- ❖ Swivel rope hooks

V

SERIES

TANK BOX

Available in steel, smooth aluminum, diamond bright aluminum and stainless steel

FEATURES

- ❖ Single side swing door
- ❖ Anchor compression latch with cylinder lock
- ❖ Locking rods for 3 point latching
- ❖ Stainless steel "L" style hinges
- ❖ Automotive style bulb seal
- ❖ Gas spring door
- ❖ Gas bottle rack for 2 bottles
- ❖ Louvers in back
- ❖ Drain holes in bottom
- ❖ Side hinging - roadside or curbside
- ❖ Reinforced floor with bottle dividers



WIDTH RANGE

24-40 inches

HEIGHT RANGE

36-72 inches

DEPTH RANGE

18-36 inches

OPTIONS

- ❖ Extra bottle holder
- ❖ Welded in shelf

D

SERIES

Drop down door with step on side on of box
Available in steel, smooth aluminum, stainless steel



FEATURES

- ❖ Two heavy duty steel pooched steps
- ❖ Stainless steel L hinge
- ❖ Automotive bulb seal
- ❖ Powder coat - textured black (standard)
- ❖ Gloss black and white available



WIDTH RANGE
36-72 inches

HEIGHT RANGE
18-28 inches

DEPTH RANGE
18-36 inches

OPTIONS

- ❖ Roadside/curbside step
- ❖ Welded in shelf

B

SERIES

CONTOURED STEP BOX
One drop down door with storage behind non slip steps

Available in smooth aluminum box with either a diamond bright aluminum or stainless steel door



FEATURES

- ❖ Stainless steel T handle
- ❖ Stainless steel continuous L hinge
- ❖ Powder coat - textured black (standard)
- ❖ Gloss black and white available



WIDTH RANGE
12-48 inches

HEIGHT RANGE
24-30 inches

DEPTH RANGE
28-36 inches

OPTIONS

- ❖ Removing the steps

MADE IN THE UNITED STATES OF AMERICA



T

SERIES

TONGUE BOX
Available in steel, smooth aluminum, diamond bright aluminum and stainless steel



FEATURES

- ❖ Stainless steel paddle/rotary latches with cylinder lock
- ❖ Stainless steel "L" style hinge
- ❖ Heavy-duty gas props
- ❖ Neoprene flat weather seal
- ❖ Powder coat — textured black (standard)
- ❖ Gloss black and white available



WIDTH RANGE
16-48 inches

HEIGHT RANGE
14-30 inches

DEPTH RANGE
14-36 inches

OPTIONS

- ❖ Vertical divider

Q

SERIES

Available in steel, smooth aluminum, diamond bright aluminum and stainless steel



FEATURES

- ❖ Convenience of a chest with easy access bottom storage
- ❖ Stainless steel handles
- ❖ Stainless steel continuous L hinge
- ❖ Neoprene flat weather seal
- ❖ Powder coat - textured black (standard)
- ❖ Gloss black and white available



WIDTH RANGE
24-96 inches

HEIGHT RANGE
20-30 inches

DEPTH RANGE
18-30 inches

OPTIONS

- ❖ Shelf in lower compartment
- ❖ Vertical divider(s) in upper compartment



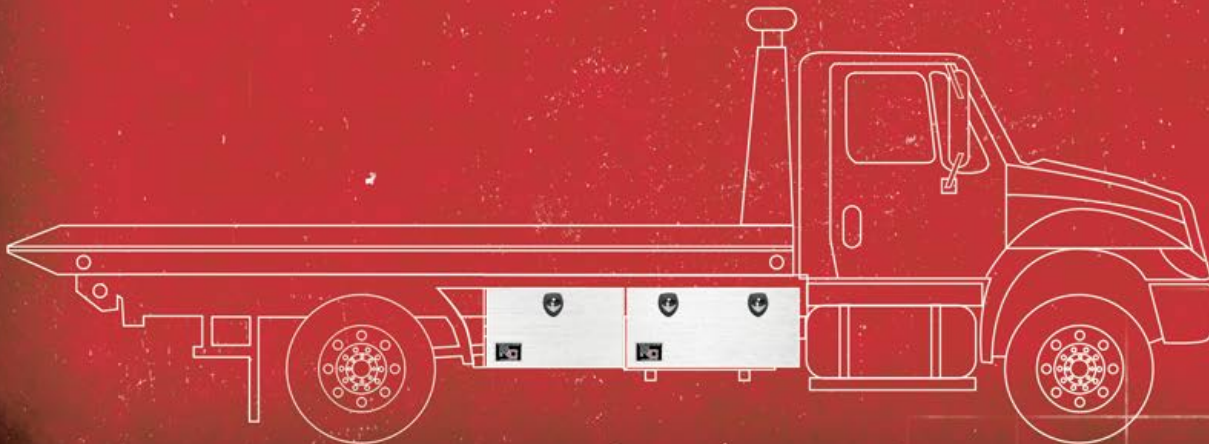
TOWING



RC Industries leads the way in the tow truck marketplace. Our company designs and builds the most popular boxes for durability and variety. All are water resistant and will keep your tools handy and dry.

ACCESSORY OPTIONS

- ❖ Top drawers in boxes to store smaller items, leaving the bottom of box open
- ❖ Fender box to finish off the polished look
- ❖ Basket box to store brooms and garbage cans
- ❖ Top tray to store lumber





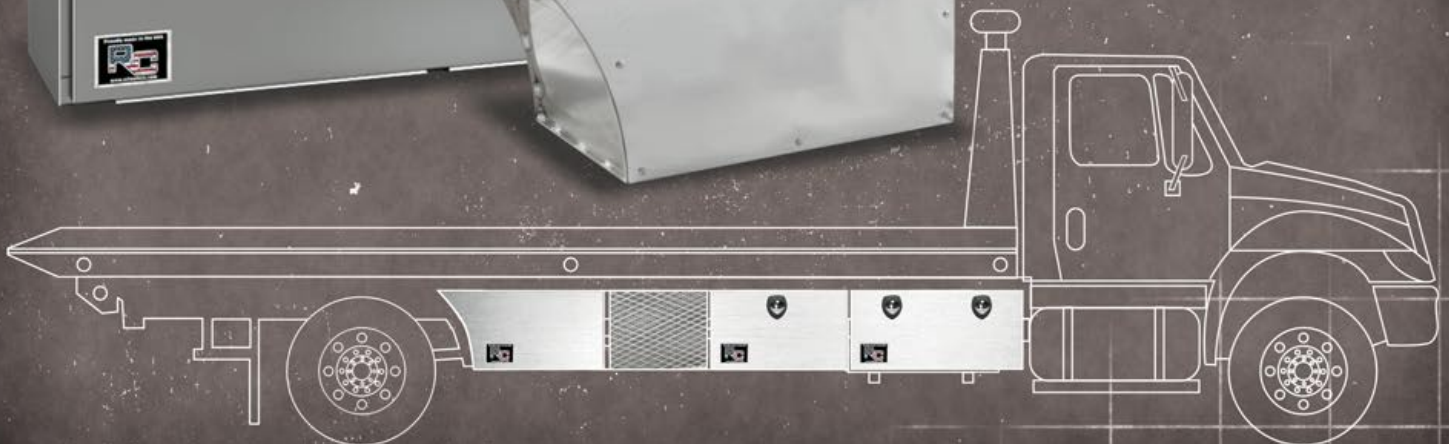
TOWING

POPULAR TOOLBOX SERIES

- ❖ M Series, Basket Boxes, Fender Boxes, and Lumber Racks

MOUNTING OPTIONS

- ❖ Heavy-duty steel "L" brackets
- ❖ Heavy-duty galvanized brackets
- ❖ Universal steel galvanized brackets





WORK



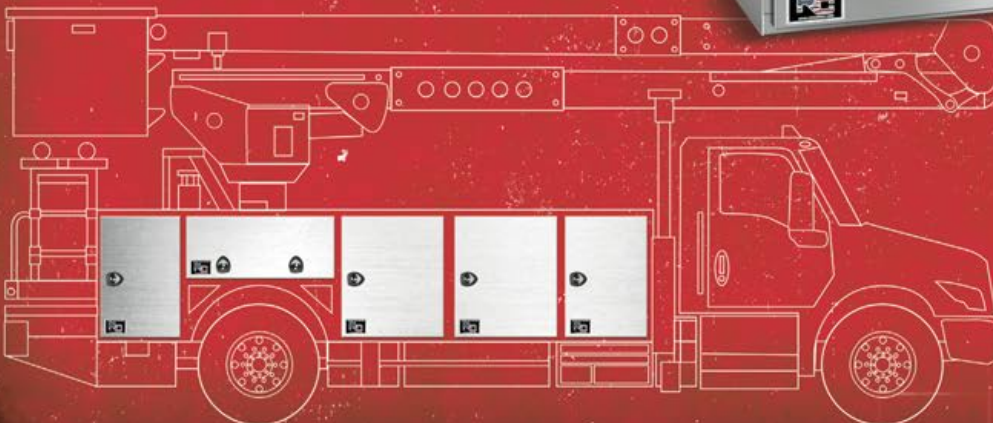
Upgrade your work truck with RC's high-quality and versatile work truck boxes. These rugged toolboxes are designed to keep your tools safe and dry, offering unmatched strength, durability, and reliability. Customize your storage space with RC's wide range of options, including behind cab storage with optional drawers, acetylene tank boxes, and underbody and above body boxes.

APPLICATIONS

- ❖ Vacuum trucks
- ❖ Dump trucks
- ❖ Crane trucks

DESIGN OPTIONS (P, M, J, C, V SERIES)

- ❖ Bottom hinging
- ❖ Top hinging
- ❖ Behind cab storage boxes with optional shelves and drawers
- ❖ Side hinging - one, two, three, or four doors





CONTRACTOR

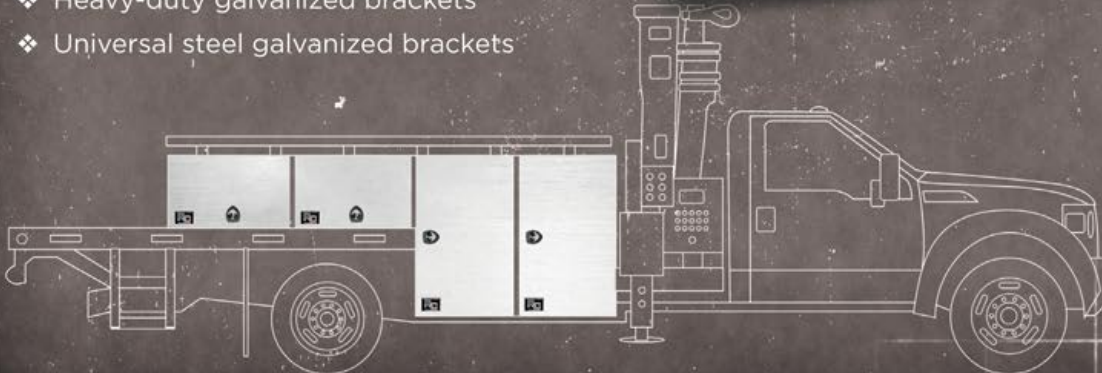
Introducing RC Industries' top-quality contractor tool boxes, designed to protect and secure your valuable tools. RC takes pride in offering a wide range of rugged toolboxes that are built to withstand extreme conditions, keeping your tools safe and dry. Our customizable toolboxes and options ensure you'll find a perfect fit in any space, for maximum storage.

APPLICATIONS

- ❖ Roofing
- ❖ Concrete
- ❖ Lumber/crane trucks
- ❖ Plumbing/HVAC/Electric trades

MOUNTING OPTIONS

- ❖ Heavy-duty steel "L" brackets
- ❖ Heavy-duty galvanized brackets
- ❖ Universal steel galvanized brackets





TRAILER



For big rigs, semi trailers, or trailers of any size, RC Industries' toolboxes are designed to keep your tools secure and protected from the elements. All are customizable and offer ample storage options for every need. With RC's legendary craftsmanship, you can trust that tools will stay more organized, safer and secure, no matter how long the journey.

APPLICATIONS

- ❖ All enclosed trailers and semi truck trailers
- ❖ Tanker trailers with rail frames
- ❖ Commercial
- ❖ Enclosed cargo with tool boxes
- ❖ Sports/hobbyist trailers
- ❖ Dog and horse trailers



MOUNTING OPTIONS

- ❖ Heavy-duty steel "L" brackets
- ❖ Heavy-duty galvanized brackets
- ❖ Universal steel galvanized brackets





OPEN TRAILER

Whether you're upfitting trailers for landscaping, construction use, or just a hobby, you need your toolboxes to keep tools, gear and valuables dry and safe. RC Industries offers a variety of storage options with a reputation for strength, durability and reliability. Best of all, RC will customize your toolbox the way you want it. You'll find tongue boxes, chest boxes and every other style of toolbox for any specific need.



MOUNTING OPTIONS

- ❖ Heavy-duty steel "L" brackets
- ❖ Heavy-duty galvanized brackets
- ❖ Universal steel galvanized brackets





MISC. TRUCK

Discover the perfect toolboxes at RC Industries. These durable and weather-resistant products are designed to keep your tools secure and protected. With customizable options, you can optimize storage and easily maximize every inch of usable space in your truck. Trust our legendary toolboxes to provide the ultimate solution for all of your storage needs.

APPLICATIONS

- ❖ Everyday pickup trucks
- ❖ Farm trucks
- ❖ SUVs and Side-By-Sides
- ❖ Misc. work trucks for many services
- ❖ Tractors
- ❖ Custom designed for your exact need

MOUNTING OPTIONS

- ❖ Heavy-duty steel "L" brackets
- ❖ Heavy-duty galvanized brackets
- ❖ Universal steel galvanized brackets



ACCESSORIES



DRAWER PACKS

- ❖ Galvanized steel drawer
- ❖ Heavy-duty slides
- ❖ Stainless steel T-handle with cylinder lock
- ❖ Dividers and sub-dividers sold separately



ADJUSTABLE SHELF KIT

- ❖ Two end panels and a shelf that snaps in place
- ❖ Quantity of Trays dependent on box dimension



SLIDE OUT TRAYS

- ❖ Quantity of drawers dependent on box dimensions
- ❖ Dividers and sub-dividers
- ❖ Mounting brackets to mount into toolbox

LATCHES



SS T HANDLE

PN: 13-8400-SSL



ANCHOR HANDLE

PN: 8-325-281



PADDLE LATCH

PN: 3W-461-545-SSL

MOUNTING BRACKETS



RC0001

- ❖ 7 ga steel construction
- ❖ Black powder coated
- ❖ Universal mounting
- ❖ Brackets sold separately



RC011 L/R

- ❖ Hot dipped galvanized Heavy duty brackets
- ❖ 25" Steel construction
- ❖ Bracket not Universal - specify Left or Right
- ❖ Brackets sold separately



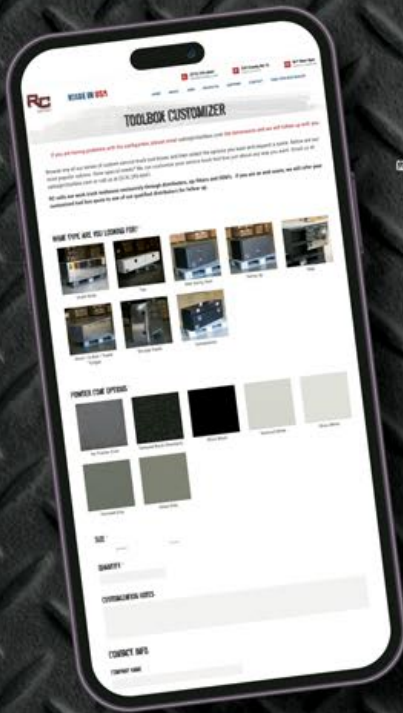
RC012 L/R

- ❖ Hot dipped galvanized Heavy duty brackets
- ❖ 25" Steel construction
- ❖ Bracket not Universal - specify Left or Right
- ❖ Brackets sold separately



RC013

- ❖ Hot dipped galvanized Heavy duty brackets
- ❖ 25" Steel construction
- ❖ Bracket is Universal mounting
- ❖ Brackets sold separately



TRY OUR TOOLBOX CUSTOMIZER ONLINE

RC's helpful toolbox configurator is a software tool that allows you to customize and configure a toolbox of your choice to your specific needs or preferences. Options include selecting the type of box, size, material, and color and seeing a 3D visualization of RC's products. The online website will enable you to get up to date pricing, and change quotes into orders that are sent directly to RC's Sales Department. Simply visit our website at the QR code below and get started discovering a custom solution for your exact need. It's as easy as the push of a button.

WHY MADE IN USA MATTERS

It matters to us! RC Industries is hard working people striving to manufacture the best toolboxes and metal fabrication in the industry. Our mission is delivering a creative solution for the customer through state-of-the-art production in Elkhart, Indiana. Using high-quality materials and equipment in a safe facility, American-made is always a more responsible and environmentally friendlier way.



RCTOOLBOX.COM



555 County Rd 15 • Elkhart, IN 46516 • Phone: 574-295-6641 • sales@rctoolbox.com